

## Roehampton Church Forest School



# Newsletter



Email: info@roehampton.wandsworth.sch.uk

Tel: 020 8788 8650



## Value of the term is: Friendship

'A friend loves at all times. They are there to help when trouble comes.'

*Proverbs 17:17*



Dear Parents and Carers,

Another busy and exciting week has passed at Roehampton Church Forest School. Oak Class (Nursery & Reception) thoroughly enjoyed welcoming their parents and carers to Thursday's Stay and Play session, while Sycamore Class Y5 had a fantastic opportunity to step into the world of politics for an hour when they met Fleur Anderson, our local MP. It has also been wonderful to hear so many positive comments from parents regarding the recent changes to our drop-off and pick-up arrangements. Having members of staff present at both the KS1 and KS2 gates has been warmly received and we truly appreciate all of your supportive feedback.

Due to popular demand, we are delighted to announce that our after-school care provision is now available every day. Please remember that booking through the Arbor app is essential, so that we can ensure appropriate staffing levels to support all children attending.

Next week is a very important one for our Elder Year 6 class as they take their SATs tests. We are incredibly proud of the hard work, commitment and resilience they have shown in preparation for these assessments. We know they will all do their very best and we wish them the very best of luck.

You will all be amazing, Year 6, Class of 2026!

Reminder: Breakfast is on us for Year 6 next week from 8.15am Monday to Thursday in the Year 6 Classroom.

With best wishes for a relaxing and enjoyable weekend,

Mrs Azurdia

Acting Headteacher



## Wraparound Care

**Morning provision 7.45-8.45am**

**EVERY DAY in KS2** £3 a session.

**After School Care 3.30-4.30pm**

**EVERY DAY** £3 a session. Please

note below After School Care pick up locations:

Monday in **KS2**

Tuesday in **KS1**

Wednesday in **KS2**

Thursday in **KS1**

Friday in **KS2**

**Currently for this half term, the house with the most points is: Hedgehog**



## Merits

The following children were awarded Merits today in Collective Worship.

Congratulations all of you. We are extremely proud of you.

Group	Merits	Group	Merits	Group	Merits	Group	Merits
EYFS	<b>Kimmy and Hakim</b> - For being kind to their friends always. They are gentle, fair, polite and helpful. <b>Value</b> – Responsible and Caring.	<b>Year 2 Ash</b>	<b>Bethany</b> – For great vocabulary and interesting adjectives in her writing. <b>Value</b> – Secure.  <b>Ruhi</b> – For her Peppa Pig pond story and improving in her 2 times tables. <b>Value</b> - Secure	<b>Year 4 Rowan</b>	<b>Miyah</b> – For increased confidence in discussing the texts in Rapid Read sessions with Mrs Joseph. <b>Value</b> – Fearless. <b>Mahrukh</b> - For making lots of great contributions this week in all our lessons. Great to have such a positive attitude to learning. <b>Value</b> – Secure.	<b>Year 6 Elder</b>	<b>Adriel</b> – For applying what he has learnt in all subjects. He listens, thinks and then implements. <b>Value</b> – Responsible. <b>Iman</b> - For not giving up, even when the challenge is tough, especially in Maths and English. <b>Value</b> - Fearless
<b>Year 1 Willow</b>	<b>Amber</b> – For continuing to write her diary for homework and sharing her news with the class. <b>Value</b> – Responsible.  <b>Aariz</b> - For beginning to show confidence in the playground by joining in games with his friends. <b>Value</b> – Fearless.	<b>Year 3 Maple</b>	<b>Caelan</b> - For being praised by the swimming teacher for making a great effort this week. <b>Value</b> - Fearless.  <b>Mason</b> – For making up some great similes in English. <b>Value</b> – secure.	<b>Year 5 Sycamore</b>	<b>Nailia</b> - For her originality in her writing. <b>Value</b> – Secure. <b>Anaya</b> - For her constant hard work and focus in her writing <b>Value</b> – Responsible.	<b>Forest School</b>	<b>Marson</b> – For great concentration and skill when doing a push stroke with a knife. <b>Value</b> – Responsible.  <b>Elana</b> – For always remembering the Forest School rules and reminding others. <b>Value</b> – Responsible and caring.

We are excited to share how our pupils develop their geographical understanding through our topic-based curriculum. From Year 1 to Year 6, children explore Geography in depth during two dedicated “focus” half-terms each year, while geographical themes are also woven throughout other areas of learning. Our youngest learners in the Foundation Stage begin by exploring familiar environments such as the school grounds, the church and the local common, alongside exciting visits to the farm. As pupils progress through the school, we place a strong emphasis on practical, hands-on experiences, including the use of maps, globes and compasses, as well as fieldwork activities that bring the subject to life and make it accessible and engaging for every child. To further enrich your child’s experiences, you may wish to take advantage of the many geographical opportunities available across London. Suggested visits could include fieldwork along the River Thames, exploring ecosystems at Kew Gardens, studying settlements and landmarks in Greenwich, or investigating urban development and mapping skills in the City of London. Younger children may also enjoy visits to places such as the London Wetland Centre or local parks and commons to support their understanding of the natural environment. For a closer look at what your child will be learning this year, please explore our Curriculum Maps, available on the school website. Best wishes, Miss Jelley - Geography Lead



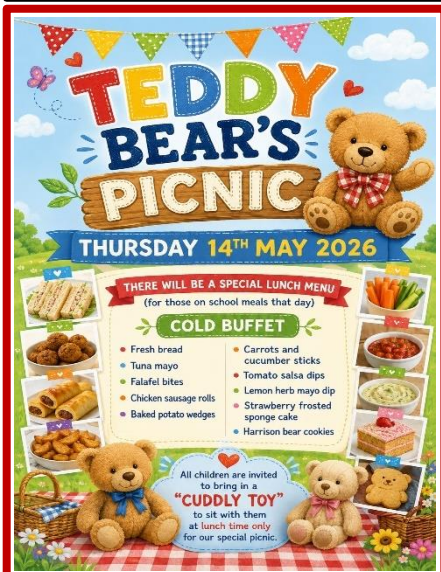
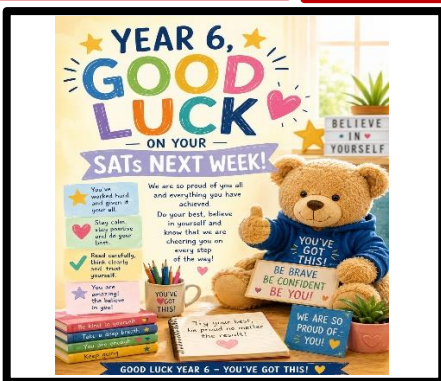
As our academic year enters assessment season, parents can play a huge role in helping children stay calm and confident. One of the best ways to reduce pressure is to keep routines as normal as possible at home. Regular bedtimes, healthy meals and time to relax or play can make a real difference to children’s wellbeing and focus.

It is important to remind children that tests are simply an opportunity to show what they know, not something to fear. At RCFS, staff encourage children to showcase their learning in many ways, with assessment being just one of them. Praising effort rather than results and encouraging children to talk about worries or ask questions, can also help. Simple calming activities such as deep breathing, reading together or spending time outdoors can be reassuring. To support our Year 6 pupils during SATs week, we are delighted to offer the class a FREE breakfast from 8:15am, Monday to Thursday next week.

With warm wishes,  
Mrs Lee – English Lead



My name is Kumba I am the Children and Families Leader at Holy Trinity Roehampton Church. As part of my role, I create free provisions and support for parents and children in the community. Starting on Monday 11th May, I will be running a FREE weekly parent and baby/toddler group at Holy Trinity Roehampton Church — a welcoming space where parents and children can connect with others, build friendships and know that they are not alone. If this is something you are interested in, please email me at [kumba@holytrinityroehampton.org](mailto:kumba@holytrinityroehampton.org) I look forward to hearing from you and meeting you and your little ones!



### Diary Dates Summer Term 2026

#### May

- 11<sup>th</sup> Elder (Y6) SATS (Spelling & SPAG)
- 11<sup>th</sup> Willow & Ash (Y1/Y2) trip to Kew Gardens Pick up 4pm
- 12<sup>th</sup> Elder (Y6) SATS (Reading)
- 13<sup>th</sup> Elder (Y6) SATS (Arithmetic & Maths Reasoning)
- 14<sup>th</sup> Whole School Teddy Bear’s Picnic at Lunchtime
- 14<sup>th</sup> Elder (Y6) SATS (Maths Reasoning)
- 15<sup>th</sup> Elder (Y6) Author visit – Chris Packham at Ark Putney Academy (8.45am start)
- 20<sup>th</sup> Oak (Rec) Trip to Polka Theatre
- 22<sup>nd</sup> Elder (Y6), Sycamore (Y5), Rowan (Y4), Maple (Y3) AI Presentation in school
- 22<sup>nd</sup> Break up for Half Term (3:20/3:30 finish)

#### June

- 1<sup>st</sup>-12<sup>th</sup> Y4 Multiplication Tables Check
- 8<sup>th</sup> - 12<sup>th</sup> Y1 Phonics check
- 15<sup>th</sup> Assessment week (Y1 – Y5)
- 17<sup>th</sup> Grand Opening of Queensmere Pond (selected classes TBC)
- 27<sup>th</sup> Summer Fair (Time TBC)

29<sup>th</sup> INSET day

30<sup>th</sup> Ibstock Activity day for Y6

#### July

6<sup>th</sup> Ash (Y2) Trip to Hobbledown

8<sup>th</sup> Last swimming session for Y3

17<sup>th</sup> Last day of term. (1.20pm finish)

20<sup>th</sup> INSET day

**These dates are added to weekly**

### ATTENDANCE this academic year

Number of pupils 126	
Whole school attendance	92.0%
Authorised absence	4.7%
Unauthorised absence	3.9%
Lates	1.9%

### Attendance of each class this academic year. Target is 96% or more.

Oak Nursery 1	Oak Nursery 2	Oak Reception
81.5%	87.6%	91.4%
Willow Year 1	Ash Year 2	Maple Year 3
90.8%	93.7%	93.9%
Rowan Year 4	Sycamore Year 5	Elder Year 6
83.3%	93.3%	95.1%